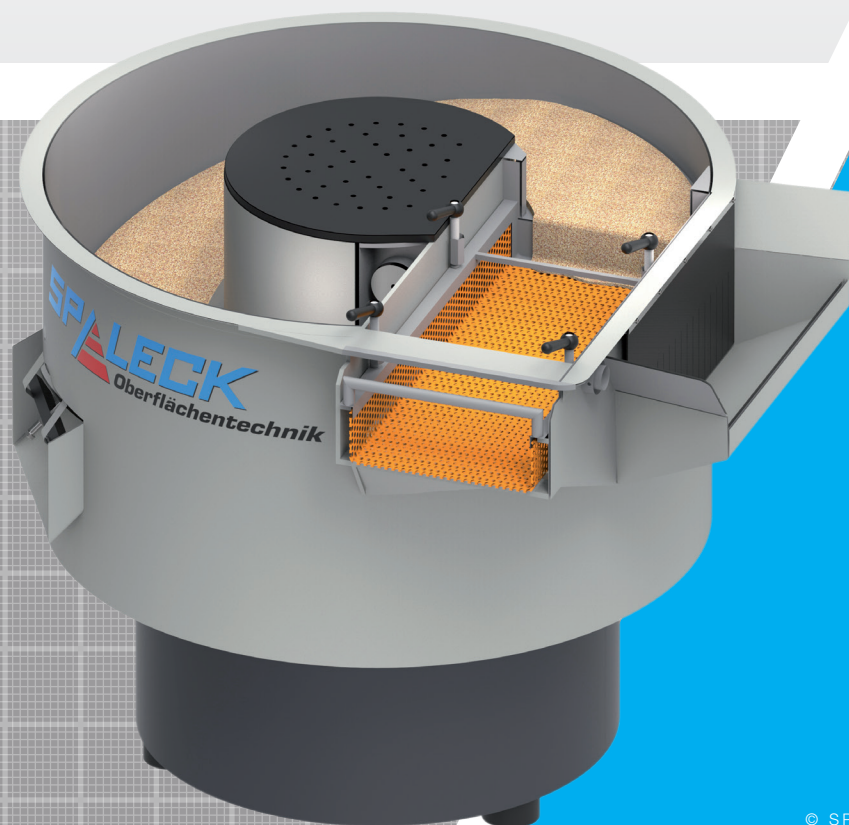


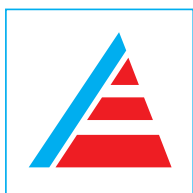
ROUNDTUB DRIERS
SVT



© SPALECK ENGINEERING

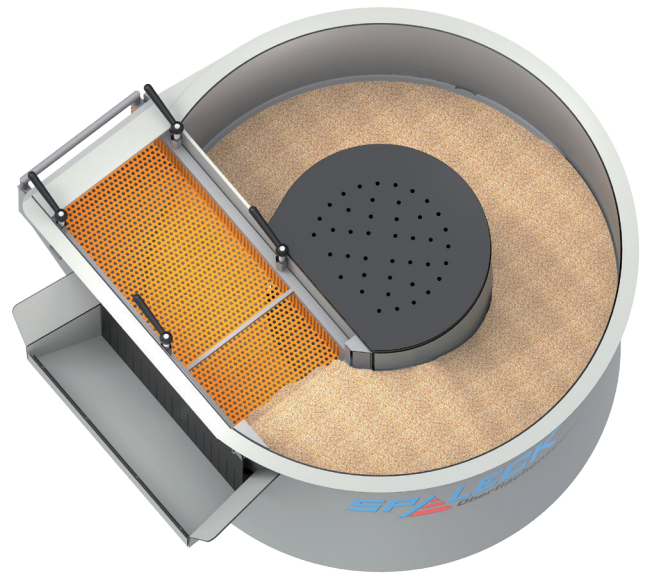
Spotless drying and polishing of all types of parts

Indirect heating system at the bottom of the working tub to heat the drying media via the tub bottom. Suitable for continuous or batch drying after surface finishing or ball burnishing.



MADE IN GERMANY

www.spaleck.biz



ROUNDTUB DRIERS SVT

Technical features:

- Indirect heating system with continuous temperature regulation
- Integrated separation unit
- Entry and discharge offset by 90 degrees

Optional features:

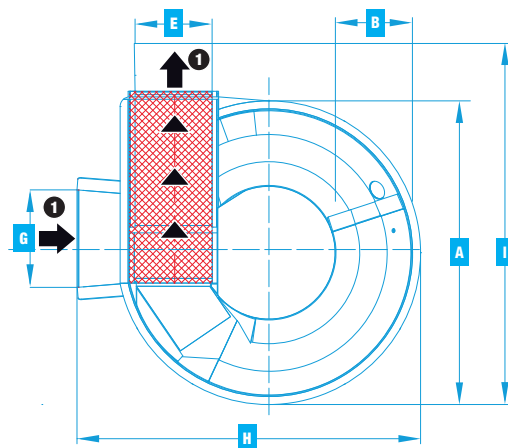
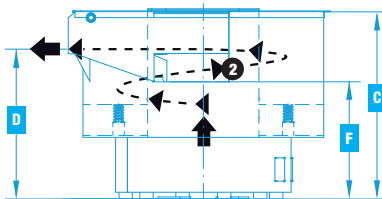
- Pneumatic flap for multiple circulation of parts
- Dust cover and extraction
- Blowing unit above the separation unit

Technical data:

Description		SVT2	SVT3	SVT5
Working tub volume	l	150	220	470
Operating voltage	V Hz	400 50	400 50	400 50
Drive power	kW	0,75	0,75	1,5
Motor speed	Rpm	1460	1460	1400
Heating capacity max.	kW	2,0 4,0	2,3 4,6	6,5 9,75
Empty weight basic machine	kg	400	500	1140
Operating weight max.	kg	500	700	1420
Space requirement	m ²	1,5	1,6	2,8

Dimensions in mm:

Description		SVT2	SVT3	SVT5
Diameter drier	A	1080	1160	1640
Width drier	B	250	300	400
Top edge drier	C	985	1050	1200
Bottom edge discharge	D	855	870	965
Width discharge	E	250	320	430
Bottom edge entry	F	860	870	960
Width entry	G	450	430	600
Width drier incl. entry	H	1250	1400	1800
Width drier incl. discharge	I	1340	1500	2000



- ① Parts entry and discharge offset by 90 degrees
- ② Steady rise

© SPALECK ENGINEERING