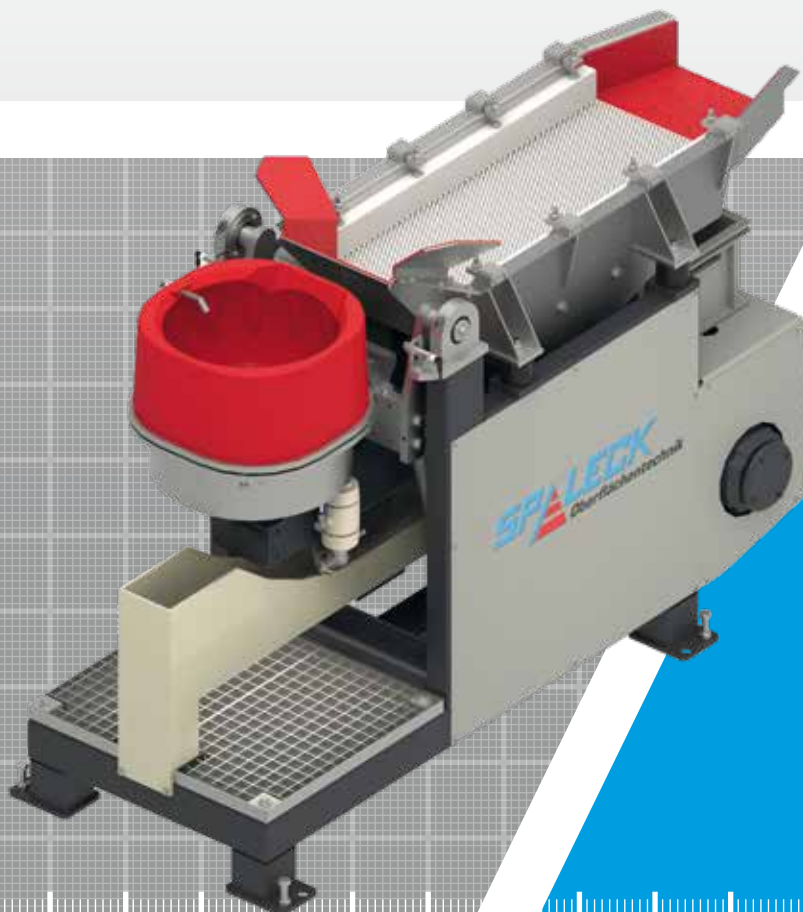


CENTRIFUGAL FINISHING MACHINE **Z4**

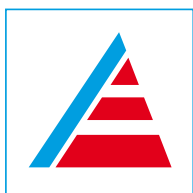


4
N

© SPALECK ENGINEERING

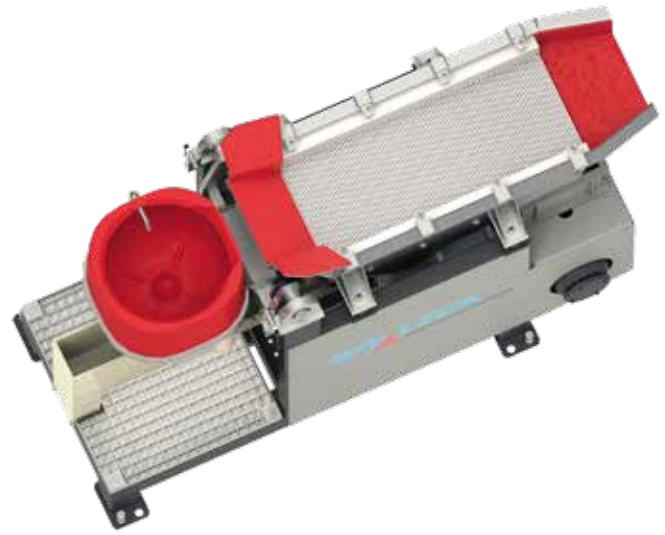
**Deburring - Edge rounding - Cleaning
Polishing - Ball burnishing**

For the treatment of sensitive parts with low dimensions as well as small batches with high-quality requirements.



MADE IN GERMANY

www.spaleck.biz



CENTRIFUGAL FINISHING MACHINE **Z4**

Technical specifications:

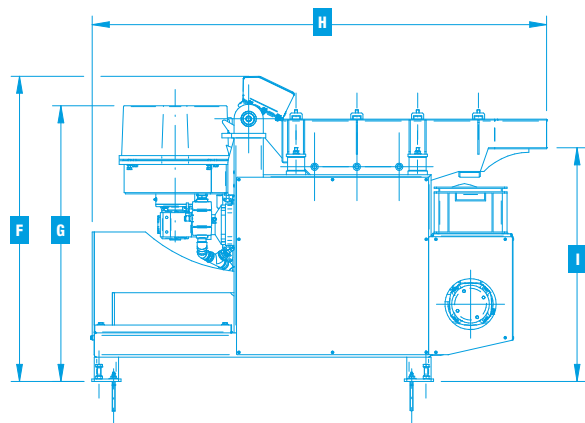
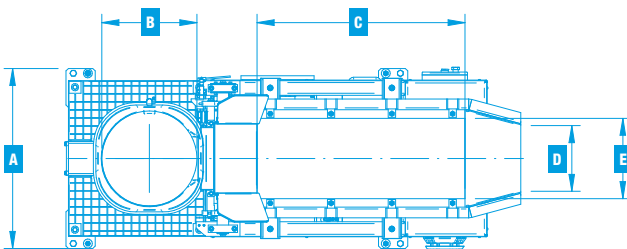
- Frequency converter for a continuous adjustment of the rotor speed
- Tub lining made of low wear polyurethane with anti-adhesion texture
- Continuous level adjustment of the processing liquid inside the working tub for the treatment of sensitive parts
- Special tub geometry and rotor design for an intensive treatment and lowest processing times
- Integrated separation unit for the separation of abrasive media and parts as well as separation of undersize abrasive media (undersize separation)

Technical data:

Description		Z4
Working tub volume	l	30
Usable tub volume	l	20
Operating voltage	V Hz	400 50
Connected load	kW	3,6
Rotor speed max.	Upm	280
Gap width	mm	≥ 0,4
Discharge angle	°	150
Space requirement	m ²	1,4

Dimensions in mm:

Description		Z4
Machine width	A	740
Diameter working tub	B	390
Length separation zone	C	855
Discharge width	D	270
Width separation zone	E	330
Top edge machine	F	1250
Top edge working tub	G	1130
Machine length	H	1870
Bottom edge discharge	I	960



© SPALECK ENGINEERING